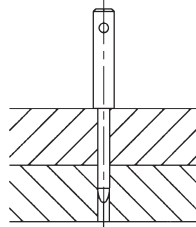


SHOULDER PINS

PIN: 1215 STEEL, CARBURIZED-HARDENED, BLACK OXIDE FINISH
HANDLE: 1215 STEEL, BLACK OXIDE FINISH

1



To order Shoulder Pins with a standard 10-12" cable assembly attached, add "-C" to the part number. (CL-2-C cable with a terminal for #10-32 or M5 attachment screw).
Example: CL-7-SP-C

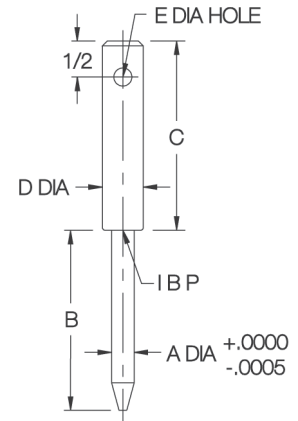
Removable locating pin with a straight handle, precision ground for accurately aligning holes. The handle is drilled for attaching a cable.

INCH

PART NO.	A DIA		B	C	D DIA	E DIA
	NOMINAL	ACTUAL				
CL-7-SP	1/4	.2500	2-1/2	2-5/8	1/2	1/4
CL-10-SP	5/16	.3125			9/16	
CL-14-SP	3/8	.3750	5/8		1/4	
CL-19-SP	1/2	.5000	3/4		5/16	

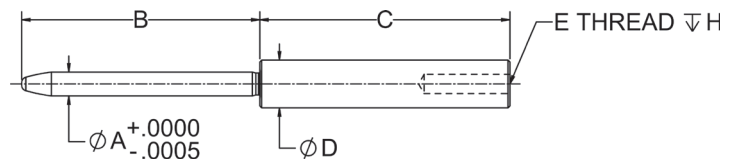
METRIC

PART NO.	A (mm)	B (mm)	C (mm)	D DIA (mm)	E (mm)
CLM-6-SP	6	65	66.5	12.5	6.5
CLM-8-SP	8	65	66.5	14	6.5
CLM-10-SP	10	100	66.5	16	6.5
CLM-12-SP	12	75	66.5	19	8



SHOULDER POTTING PINS

1144 STEEL, BLACK OXIDE FINISH



New item!

Shoulder Potting Pins are removable alignment pins used for positioning components to be potted in carbon-fiber composites. The precision-ground pin body and the handle are made from one solid piece of high-carbon steel. The handle end is tapped to allow using a pulling tool. Available in pin diameters from 1/8 to 1/2".

PART NO.	A DIA		B	C	D DIA	E THREAD	H
	NOMINAL	ACTUAL					
CL-225-SPP	1/8	.1250	2.50	2-5/8	1/2	1/4-20	3/4
CL-425-SPP	1/4	.2500	2.50	2-5/8	1/2	1/4-20	3/5
CL-525-SPP	5/16	.3125	2.50	2-5/8	5/8	1/4-20	3/6
CL-640-SPP	3/8	.3750	4.00	2-5/8	5/8	1/4-20	3/7
CL-840-SPP	1/2	.5000	4.00	2-5/8	3/4	1/4-20	3/8